

RavenMason Ceramics Collection

Visiting and Learning

Open events are held throughout the year

Group, private and study visits, talks, lectures and events by arrangement.

Visits can be themed around specific areas of study including history, art and design, business and management, museum and heritage studies at all levels from KS3 to post-graduate research.

Ask for details of combined visits and tours to other ceramics sites and museums in and around the Potteries.

Lectures about the Masons and the collection are available for conferences and meetings at your venue.

For more information, open events and visiting keele.ac.uk/ravenmason

Collection catalogue listing keele.ac.uk/library/specarc/collections/ravenmason

**FREE
ENTRY**



Where to find us

For more information visit keele.ac.uk/findus



Keele
UNIVERSITY

Arts
Keele

Raven Mason Ceramics Collection
Keele Hall, Keele University ST5 5BE
Email us at ravenmason@keele.ac.uk
Telephone us at 01782 734908
keele.ac.uk/ravenmason

Keele
UNIVERSITY



Raven
Mason
Ceramics Collection

Hidden Treasures
keele.ac.uk/ravenmason



RavenMason
Ceramics Collection

Discover

One of the treasures of the University displayed in the graceful surroundings of historic Keele Hall. This remarkable ceramics collection is open to all visitors.

Ironstone china, porcelain, earthenware and stoneware by the well-known Mason Family of potters illustrating the high points and challenges of ceramics production in the world famous Staffordshire Potteries of the 19th and 20th centuries.

Enjoy ceramic highlights showing the skill and dedication of generations of craftspeople for over 200 years, along with art works and images of the Mason Family, the Potteries and workers which present a fascinating picture of an industry in times of change.

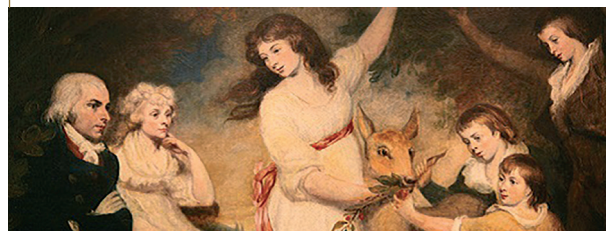
From everyday tableware to lavish decorative items for the wealthy, displays are themed around style, decoration and purpose, with information about the pots, people, processes and the renowned patent for Mason's Ironstone China.



Mason's Ironstone China 'Neopolitan Ewer' probably painted by S. Bourne c1820-25



Miles Mason and Family, late 1790s



GL Ashworth and Bros' Mason's Ironstone Factory, c1950. Image: Raven Mason Collection

About the Collection

Creators of the core collection, the Raven brothers Ronald William and John Mason and their sister Dame Kathleen shared ancestors in the Lake District with the Mason family of potters.

The Ravens generously bequeathed and gifted their treasures to the University for everyone to enjoy for learning and inspiration as part of Arts Keele heritage and special collections.

The Raven Mason Collection is an Arts Council England Accredited Museum, no. 2259. The Raven Trust at Keele University is an independent, registered charity, no. 1018133. Donations to the Trust fund are always welcome.



Fettlers, Mason's Ironstone factory, c1950. Image: Raven Mason Collection

Mason's Patent Ironstone China, ceramics and art works